

Vertebral Column

11. Using the key choices, correctly identify the vertebral parts/areas described as follows. Enter the appropriate term(s) or letter(s) in the spaces provided.

Key Choices

- | | | |
|----------------------------|-------------------------------|-----------------------|
| A. Body | C. Spinous process | E. Transverse process |
| B. Intervertebral foramina | D. Superior articular process | F. Vertebral arch |

- _____ 1. Structure that encloses the nerve cord
- _____ 2. Weight-bearing portion of the vertebra
- _____ 3. Provide(s) levers for the muscles to pull against
- _____ 4. Provide(s) an articulation point for the ribs

12. The following statements provide distinguishing characteristics of the vertebrae composing the vertebral column. Using key choices, identify each described structure or region by inserting the appropriate term(s) or letter(s) in the spaces provided.

Key Choices

- | | | |
|------------------------------|--------------------|----------------------|
| A. Atlas | D. Coccyx | F. Sacrum |
| B. Axis | E. Lumbar vertebra | G. Thoracic vertebra |
| C. Cervical vertebra—typical | | |

- _____ 1. Type of vertebra(e) containing foramina in the transverse processes, through which the vertebral arteries ascend to reach the brain
- _____ 2. Its dens provides a pivot for rotation of the first cervical vertebra
- _____ 3. Transverse processes have facets for articulation with ribs; spinous process points sharply downward
- _____ 4. Composite bone; articulates with the hip bone laterally
- _____ 5. Massive vertebrae; weight-sustaining
- _____ 6. Tailbone; vestigial fused vertebrae
- _____ 7. Supports the head; allows the rocking motion of the occipital condyles

Bony Thorax

16. Complete the following statements referring to the bony thorax by inserting your responses in the answer blanks.

- _____ 1. The organs protected by the thoracic cage include the (1) and the (2). Ribs 1 through 7 are called (3) ribs, whereas ribs 8 through 12 are called (4) ribs. Ribs 11 and 12 are also called (5) ribs. All ribs articulate posteriorly with the (6), and most connect anteriorly to the (7), either directly or indirectly.
- _____ 2.
- _____ 3.
- _____ 4.
- _____ 5. The general shape of the thoracic cage is (8).
- _____ 6.
- _____ 7.
- _____ 8.

17. Figure 5-7 is an anterior view of the bony thorax. Select different colors to identify the structures below and color the coding circles and corresponding structures. Then label the subdivisions of the sternum indicated by leader lines.

- All true ribs
- All false ribs
- Costal cartilages
- Sternum

Floating Ribs

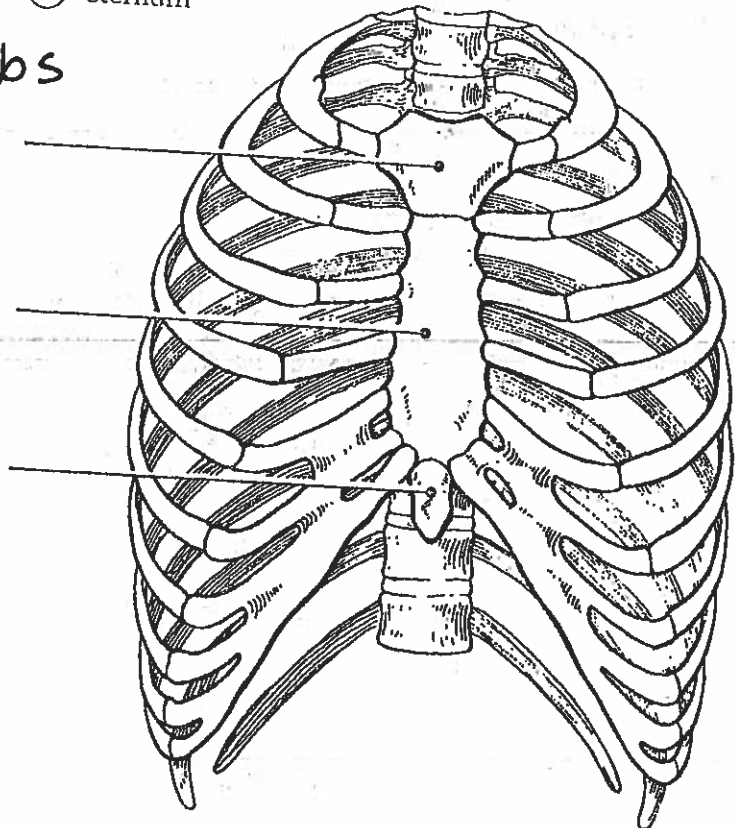


Figure 5-7